



## SAFARI V-SPEC SNORKEL

**SS125HF**

**1/2/06**

ITEM	DESCRIPTION	QTY	PART NO
1	BODY – SNORKEL (SS120HF)	1	320-133-000
2	3 ½" AIR RAM ASSEMBLY	1	000-135-800
3	BRACKET - UPPER MOUNTING	1	320-032-000
4	BOLT - HEX 6.0mm x 1.0 x 14mm (SEMS)	2	000-002-100
5	SCREW – S/T 4.2mm x 16mm – S/S	4	000-951-300
6	BODY CLIP – PLASTIC	3	000-960
7	DUCT – INNER	1	320-124-500
8	STUD - S/S 8mm x 1.25 x 25mm - O/L	6	000-110
9	WASHER - BODY 8mm x 30mm – S/S	6	000-311-300
10	NUT - NYLOC 8mm x 1.25mm – S/S	6	000-205-300
11	HOSE – AIR ENTRY (SILICONE)	1	320-024-000
12	CLAMP – HOSE 80/100mm	1	000-909
13	CLAMP – HOSE 90/110mm	1	000-910
14	TEMPLATE – GUARD PANEL	1	320-017-000
15	HOSE CLAMP - SIZE 56 (BLACK)	1	000-914/B
16	SLEEVE – AIR RAM	1	000-441-200

# **WARNING!!**

**IT IS AN INSTALLER  
RESPONSIBILITY TO VERIFY  
ALL COMPONENTS, AND  
PARTICULARLY THE  
TEMPLATE ARE CORRECT,  
BEFORE STARTING ANY PART  
OF THE SNORKEL  
INSTALLATION.**

**(CHECK TEMPLATE AGAINST  
SNORKEL BODY)**



## SAFARI V-SPEC SNORKEL

# SS125HF

---

**To Suit: TOYOTA HILUX (GGN25R Series)  
4.0L VVT-i V6 Petrol (1GR-FE Engine)  
Built: 03/2005 – 06/2015**

---

**Fitment to:** Right hand side  
**Fitting time:** Approximately 120 minutes  
**Special Tools:** 108mm Holesaw  
Step Drill  
Sikaflex 227 Adhesive Sealant / Silicone Sealant (Sensor Safe)  
Grinder  
Loctite 243 (thread lock)

---

**Prior to commencing the installation, it is the installer's responsibility to verify that all components and particular the template (item 14) are correct.**

### Instructions:

1. Remove : Right hand front wheel arch liner  
: Air cleaner entry hose.  
: Pre-spinner assembly.  
: Air intake duct.
2. Tape the template to the upper and rear edges of the right hand guard, i.e. edges adjacent to the bonnet and door respectively. Using a felt tip pen, mark all hole positions. Remove template.

3. Drill a pilot hole for each marked hole position. Using the step drill, drill the 6 snorkel body mounting hole positions to 16mm. Using the 108mm holesaw, drill the main hole. De-burr and paint all holes.

### **NEW ZEALAND INSTALLATIONS ONLY :**

Safari have developed 2 methods of Snorkel A pillar attachment, for the conventional method please proceed with the current document alternatively please see the link below for further instructions.

[www.safari4x4.co.nz/apillarmounting](http://www.safari4x4.co.nz/apillarmounting)

4. Apply Loctite 243 to each of the stainless steel mounting studs (item 8) and install the studs finger tight into the snorkel body (item 1) mounting inserts. Install the upper mounting bracket (item 3) to the snorkel body (item 1) with hex bolts (item 4).
5. Carefully install the snorkel body to the guard. With the snorkel body correctly positioned, check there is adequate clearance between the upper mounting bracket hex bolts (item 4) and the door frame, whilst opening the door. Once confirmed, mark the 3 hole positions of the upper mounting bracket onto the 'A' pillar. Remove the snorkel body from the vehicle.
6. Drill the 3 marked hole positions to 8mm. (N.B: pay close attention whilst drilling the 3 hole positions to ensure the aerial cable is not damaged in any way by drilling too deep into the 'A' pillar cavity). Deburr and paint holes. Insert the plastic body clips into the 'A' pillar, then fasten the upper mounting bracket to the 'A' pillar using necessary hardware.
7. Using a grinder, remove the 3 lugs from around the pre-spinner assembly inlet (refer to inset drawing), install the inner duct (item 7) into position. With the inner duct in position, install the air entry hose (item 11), hose clamps, pre-spinner assembly and air cleaner entry hose into position.
8. Apply a liberal amount of sealant to the inside of the inner duct and around the external surface of the snorkel body snout. Apply enough sealant to both parts to ensure a watertight connection is achieved. Install the snorkel body to the guard, guiding the snorkel body snout into the inner duct. With the snorkel body correctly positioned, fasten to the guard using necessary hardware. Fasten the upper mounting bracket to the snorkel body using necessary hardware.
9. Before securing the inner duct to the snorkel body snout, ensure the inner duct is hard up against the shoulder on the snorkel body. With the inner duct correctly positioned, secure to the snorkel body using self tapping screw (item 5).
10. With the inner duct secured to the snorkel body snout; correctly position the air entry hose, rotating the hose until it is correctly aligned onto the pre-spinner assembly, with the hose correctly positioned at either end fasten the hose clamps.
11. Re-install the wheel arch liner.

12. Install the air ram sleeve (item 16) to the snorkel body inlet (refer to the following air ram sleeve installation guide).
13. Install the black hose clamp (item 15) loosely over the base of the air ram assembly (item 2). Install the air ram assembly onto the snorkel body.

Align the air ram assembly and tighten the black hose clamp (item 15).

**N.B. It is the installer's responsibility to ensure that all connections are watertight.**



This Genuine Safari Snorkel System contains a newly designed Safari Air Ram.

Prior to installing the air ram, a special air ram sleeve may need to be installed over the end of the snorkel. This operation is best performed just prior to installing the snorkel body to the vehicle.

## Air Ram Sleeve Installation Guide

1

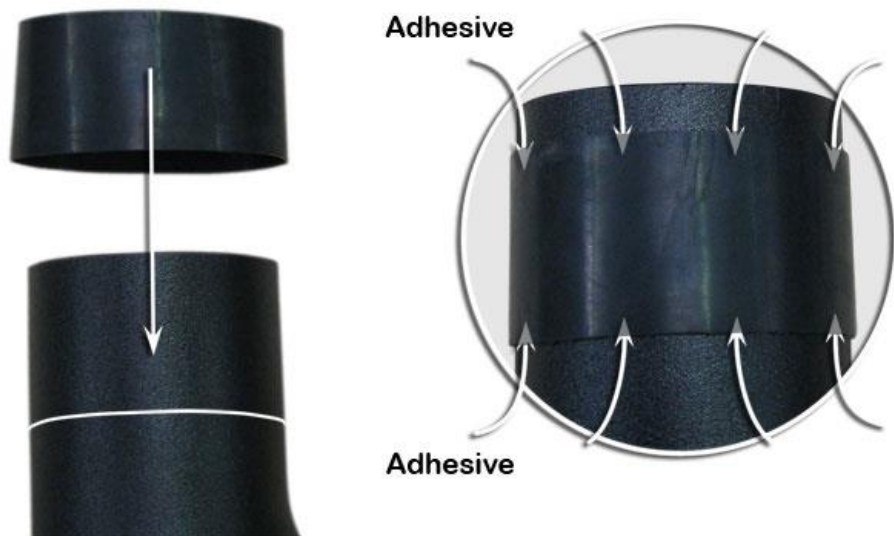
Measure 65mm down from the top of the snorkel and mark around the entire circumference.



2 Slide the air ram sleeve over the top of the snorkel.

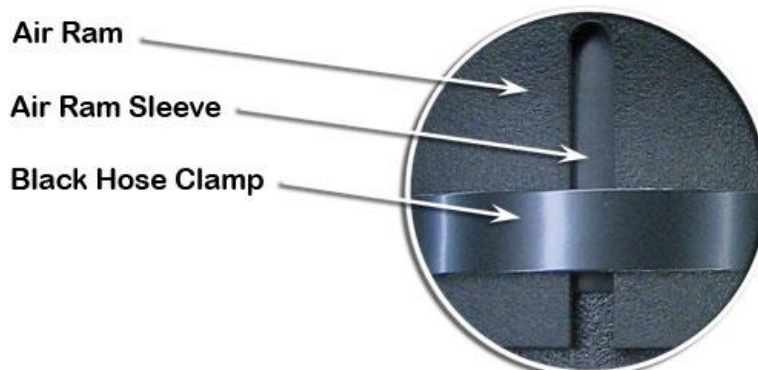
Align the bottom of the air ram sleeve with the previously marked 65mm line.

When correctly aligned, lift the edges of the hose ends slightly and apply several small dabs of Loctite 406 Instant Adhesive or similar to secure the sleeve into position.



3

Install the air ram in accordance with the enclosed snorkel installation instructions for your snorkel model.



# SAFARI

## 4X4 ENGINEERING

Model No: **SS125HF** 02/02/2006

Description: **TOYOTA HILUX 4.0L V6 VVT-i 1GR-FE Petrol Engine**

Sub Assembly: **SAFARI SNORKEL**

