



**4X4 ENGINEERING**

**STVDJ70W350**

**TOYOTA LANDCRUISER 70 SERIES VDJ MODELS**

**2007 - CURRENT**



## Parts List

ITEM	PART NO	DESCRIPTION	QTY
1	333-060 -350	TURBOCHARGER GARRET VDJ70	1
2	333-966-000	FILTER ENGINE OIL VDJ	1
3	333-064-100	GASKET-COATED-TURBO OIL OUTLET	1
4	333-064-101	WASHER ALUM TURBO OIL INLET	3
5	333-064-102	GASKET COATED COOLANT BYPASS	1
6	333-064-103	GASKET SS TURBO TO DUMP PIPE	1
7	333-064-104	GASKET COATED COMPRESSOR	1
8	333-064-105	GASKET SS FRONT EGR TO	1
9	333-064-106	GASKET SS REAR EGR TO	1
10	333-064-107	GASKET STEEL COATED OIL COOLER	1
11	333-064-108	GASKET STEEL COATED MULTILAYER	1
12	333-064-109	GASKET STEEL CTD COMPRESSOR	1
13	333-064-110	O'RING RUBBER OIL PUMP	1
14	333-064-111	O'RING RUBBER CYLINDER BLOCK	2
15	333-064-112	O'RING RUBBER DIPSTICK	1
16	333-064-113	WASHER COMPOSITE SUMP	1
17	333-064-114	WASHER STEEL/RUBBER	1
18	333-064-115	GASKET STEEL/RUBBER	1

## Installation Guide

1

Remove OE turbocharger as per Toyota Factory workshop manual instructions.

2

Install the Armax Turbocharger as per Toyota Factory workshop manual instructions.

3

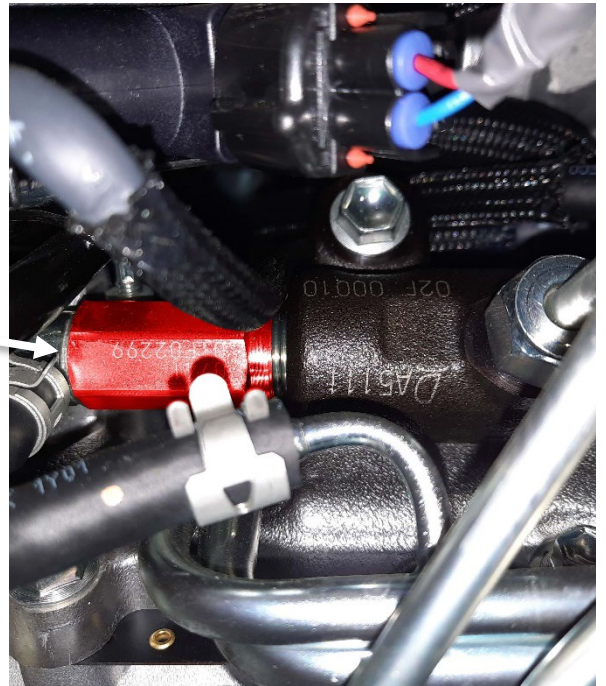
Remove Intercooler.



4

Locate Fuel Pressure Relief Valve on the front LHS end of the fuel rail and remove.

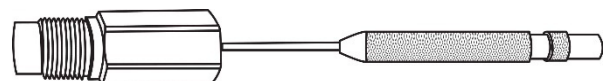
(Note: highlighted red)



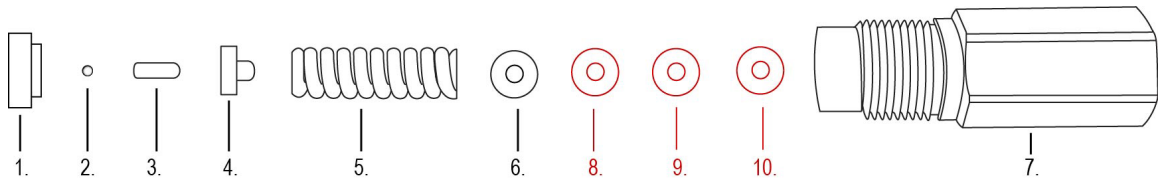
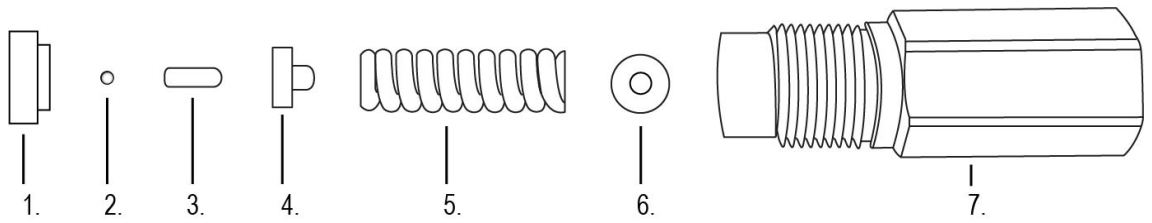
5

Using a pin punch insert punch into back of the valve body and very gently hammer the seat out of the valve body.

- **Be careful to not lose any parts.**



Insert an additional 2.5mm total thickness of M4 spacers into valve as shown.



Gently squeeze FPRV together in a soft jaw vice.

Refit to the vehicle and check for fuel leaks

Record and send a new log file to

Support @ Safari4x4.com.au.

