



SAFARI V-SPEC SNORKEL

SS550HF

01/04/15

ITEM	DESCRIPTION	QTY	PART NO
1	BODY SNORKEL	1	810-133-200
2	3 1/2" AIR RAM - Assembly	1	000-135-800
3	BRACKET - Upper - Mounting	1	810-032-000
4	GASKET	1	810-435-000
5	BOLT - Hex - 6mm x 1.0 x 12mm	3	000-002-100
8	STUD - 8mm x 1.25 x 25mm - O/L	3	000-110
9	WASHER - Body - 8mm x 30mm	3	000-311-300
10	NUT - Nyloc - 8mm x 1.25	3	000-205-300
11	SCREW - S/T - 4.2mm x 13mm	5	000-951
12	GASKET - Foam Body	1	810-016-200
13	TEMPLATE	1	810-017-200
14	CUFFED HOSE - 60mm ID x 400mm	1	000-881-040
15	HOSE - CLAMP - 50/70mm - (SILVER)	2	000-906
16	HOSE - CLAMP - SIZE 56 (BLACK)	1	000-914/B
17	SLEEVE - AIR RAM	1	000-441-200

WARNING!!

**IT IS AN INSTALLER
RESPONSIBILITY TO VERIFY
ALL COMPONENTS, AND
PARTICULARLY THE
TEMPLATE ARE CORRECT,
BEFORE STARTING ANY PART
OF THE SNORKEL
INSTALLATION.**

**(CHECK TEMPLATE AGAINST
SNORKEL BODY)**



SAFARI V-SPEC SNORKEL

SS550HF

LAND ROVER DEFENDER
TDI 300 SERIES POST MARCH 1994

TURBO DIESEL (2.5L)

Fitment to: Right hand side

Fitting time: 90 minutes

Special Tools: Unibit Step Drill

Instructions:

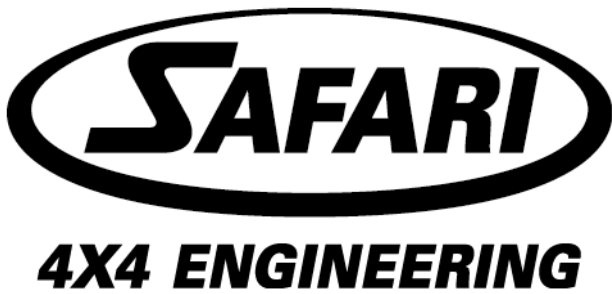
1. Remove the air intake grill and radio antenna from the right hand guard. From inside the engine bay, remove the moulded plastic duct and the first section of flexible duct.
2. Bend the lower antenna mount forward at least 90° to allow clearance for the snorkel snout.
3. Tape the template in position on the upper rear corner of the guard and mark the mounting hole locations using a felt pen. Remove the template. Drill the mounting holes to 16mm using a step drill. Deburr holes and paint.

NEW ZEALAND INSTALLATIONS ONLY :

Safari have developed 2 methods of Snorkel A pillar attachment, for the conventional method please proceed with the current document alternatively please see the link below for further instructions.

www.safari4x4.co.nz/apillarmounting

4. Bolt the upper mounting bracket into position on the snorkel body. Insert the stainless steel studs into the back of the snorkel. Locate the snorkel on the vehicle and mark the upper mounting hole locations on the windscreen frame, using a felt pen. Remove the snorkel from the car.
5. Drill the mounting holes to 3.5mm. Using a small amount of silicone, stick the foam gasket to the back of the snorkel body. Use the same method to join the upper mounting bracket to the bracket gasket.
6. Locate the snorkel on the vehicle and secure using appropriate hardware. Connect the snorkel to the water trap "T" piece using the flexible ducting supplied in the kit. Fasten this ducting using 1 x genuine clamp and 1 x clamp supplied.
7. Remove rubber flap from bottom of water trap "T". Apply silicone to rubber flap and refit to seal permanently.
8. Install the air ram sleeve (item 17) to the snorkel body inlet (refer to the following air ram sleeve installation guide).
9. Fit the air ram to the top of the snorkel and tighten the clamp. Refit the radio antenna to the guard.



This Genuine Safari Snorkel System contains a newly designed Safari Air Ram.

Prior to installing the air ram, a special air ram sleeve may need to be installed over the end of the snorkel. This operation is best performed just prior to installing the snorkel body to the vehicle.

Air Ram Sleeve Installation Guide

1

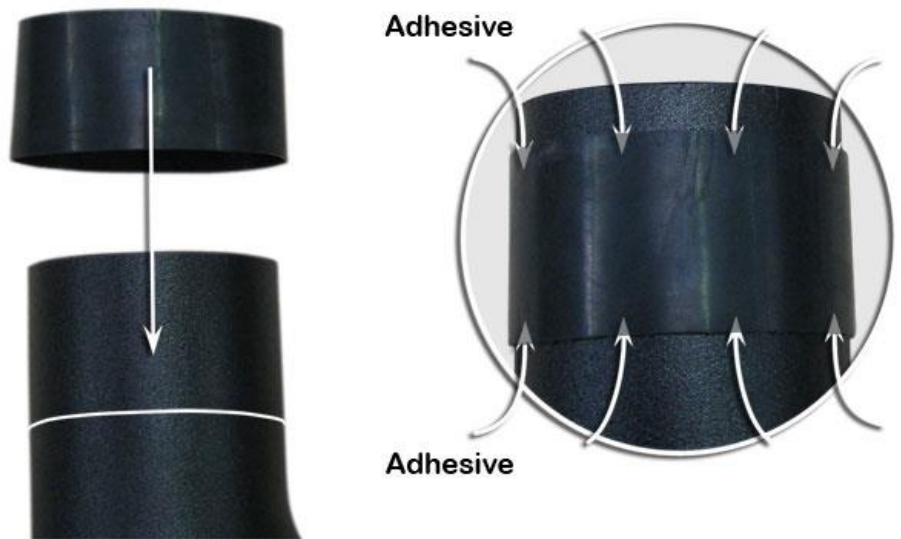
Measure 65mm down from the top of the snorkel and mark around the entire circumference.



2 Slide the air ram sleeve over the top of the snorkel.

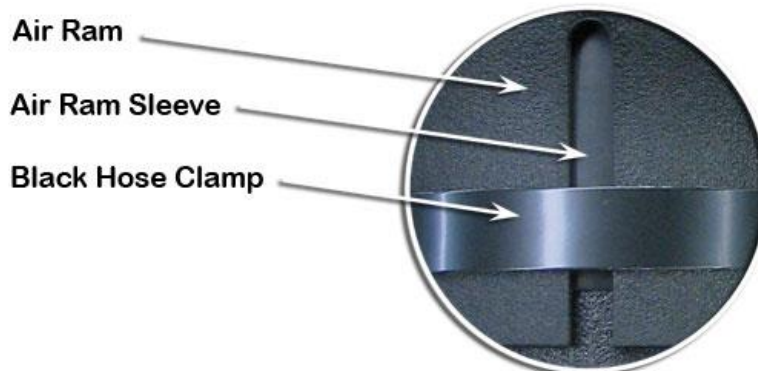
Align the bottom of the air ram sleeve with the previously marked 65mm line.

When correctly aligned, lift the edges of the hose ends slightly and apply several small dabs of Loctite 406 Instant Adhesive or similar to secure the sleeve into position.



3

Install the air ram in accordance with the enclosed snorkel installation instructions for your snorkel model.



R.H.S. LAND ROVER DEFENDER SNORKEL TDI SS-550-HF

22/3/95

