



ARMAX

SS172HP

SAFARI ARMAX SNORKEL
To Suit: TOYOTA TACOMA Gen3
3.5L V6 DOHC VVT-i Gasoline (2GR-FKS Engine)



11/04/2016

Parts List

ITEM	PART NO.	DESCRIPTION	QTY
1	337-133-000	BODY - SNORKEL (SS172HP)	1
2	000-135-960	4" AIR RAM ASSEMBLY	1
3	337-032-000	BRACKET - UPPER MOUNTING	1
4	000-002-100	BOLT - HEX - 6mm x 1.0 x 14mm (SEMS) - S/S	2
5	000-951-300	SCREW - S/T - 4.2mm x 16mm - S/S	3
6	000-960	INSERT - PLASTIC	3
7	000-110	STUD - 8mm x 1.25 x 25mm - S/S	6
8	000-311-300	WASHER - BODY - 8.4mm x 32mm - S/S	6
9	000-205-300	NUT - NYLOC - 8mm x 1.25mm - S/S	6
10	337-024-000	HOSE - AIR ENTRY	1
11	000-1911	CLAMP - HOSE - 100/120mm - S/S	2
12	000-1931/B	CLAMP - HOSE - No. 64 (BLACK)	1
13	337-017-000	TEMPLATE - FENDER	1



SS172HP

SAFARI ARMAX SNORKEL
To Suit: TOYOTA TACOMA Gen3
3.5L V6 DOHC VVT-i Gasoline (2GR-FKS Engine)

Installation Guide

Fitment to:

- Right Hand Side

Fitting Time:

- 150min

Special Tools:

- Body saw (reciprocating)
- Step drill
- Files
- Touch-up paint
- Masking tape
- Loctite 243 (thread lock)

Prior to commencing the installation, it is the installer's responsibility to verify that all components and particularly the template (Item 13) are correct.

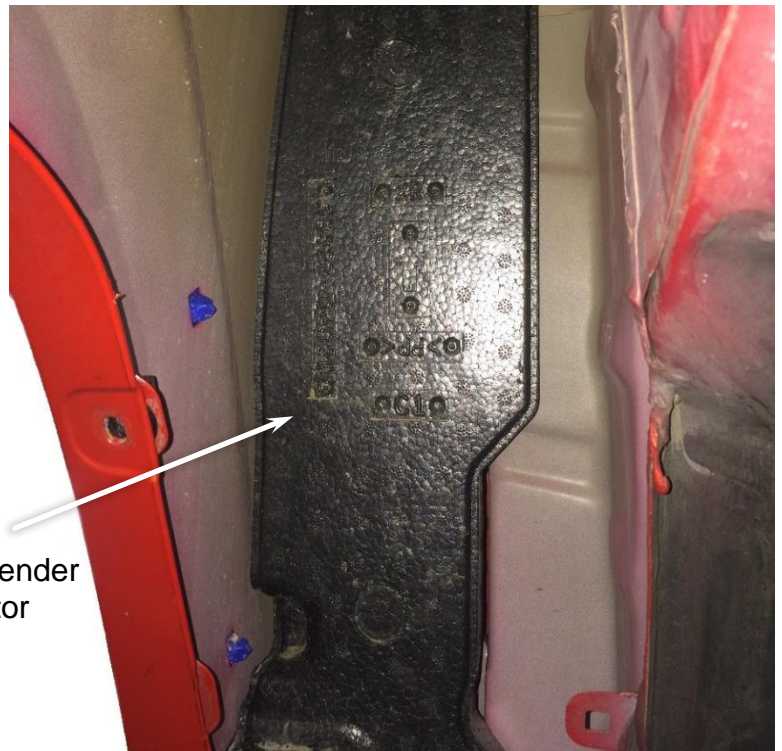
1

Remove the Right Front Fender Liner and the Air Cleaner Assembly in accordance with the factory service manual.

2

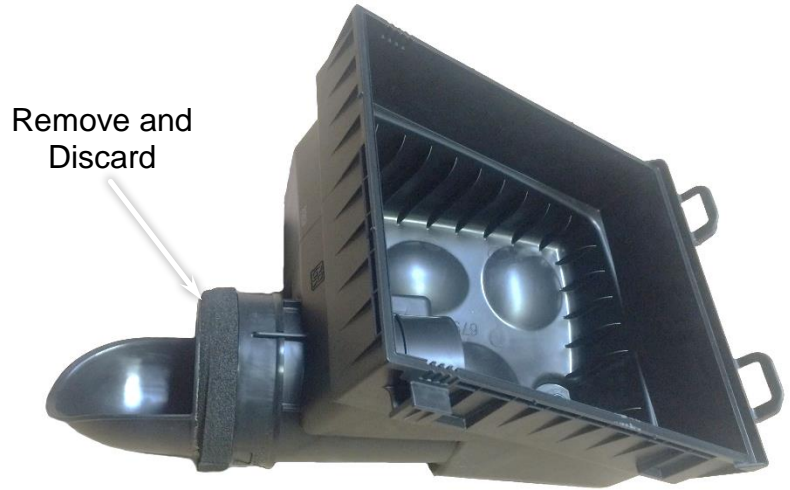
Remove the Right Front Fender Protector.

Remove Fender Protector



3

Remove and discard the air inlet duct.

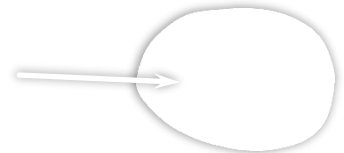


4

Remove and discard the perforated section from the fender template (item 13) as shown.



Remove and Discard

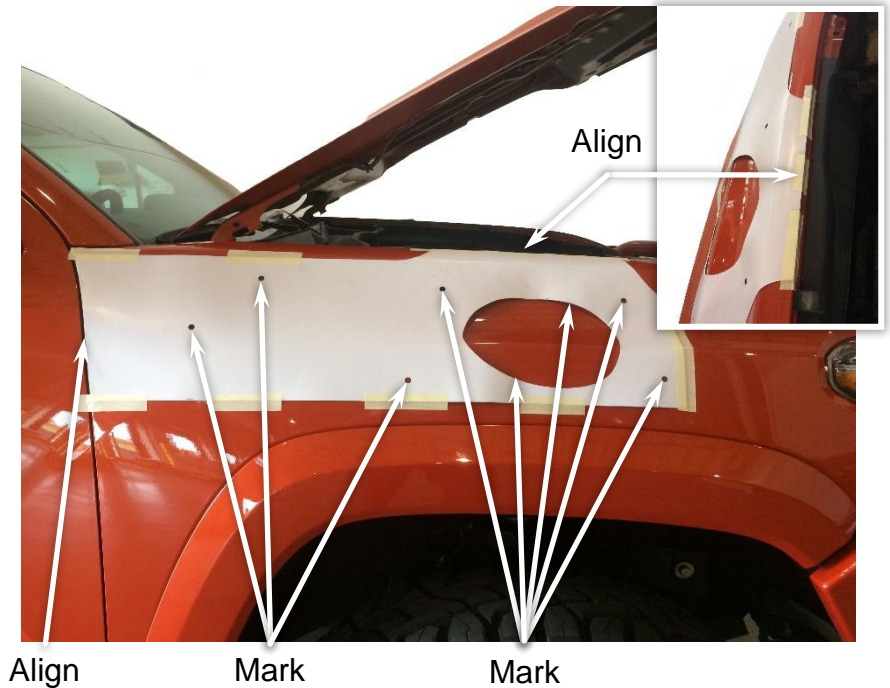


Align the fender template (Item 13) to the upper and rear edges of the right hand fender as shown.

Tape the template to the fender with masking tape.

Mark all hole positions and the cut out section with a felt tip pen.

Remove the template.



Prior to drilling any holes in the fender, place a strip of masking tape along the join of the fender flare to the fender to prevent any metal filings being trapped between the flare seal and fender.

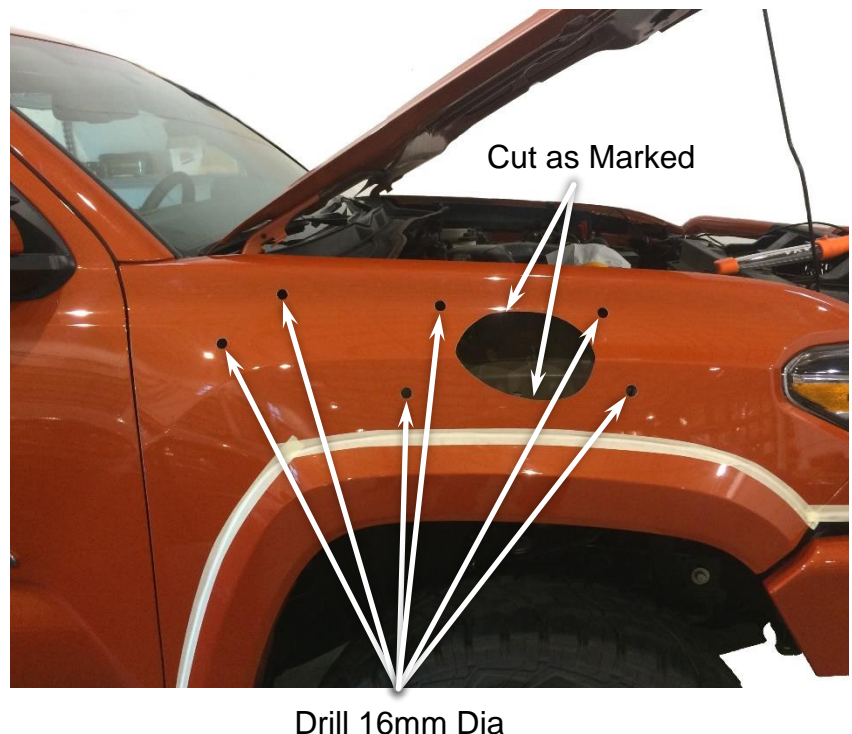
Drill a pilot hole for each of the marked locations.

Use a step drill to drill the 6 mounting holes to 16mm diameter.

Drill a starting hole for the body saw, using the body saw cut the main hole in the fender as marked from the template cut out in step 5.

Deburr and paint holes.

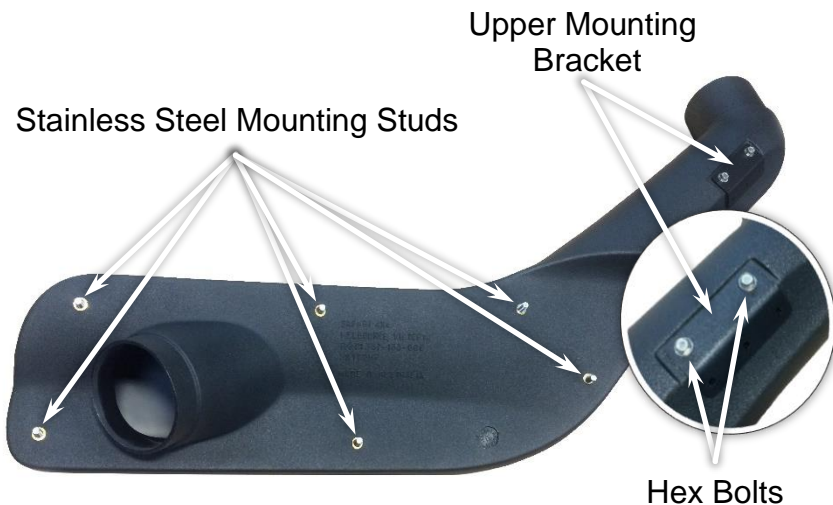
Remove the masking tape from the fender and fender flare.



Install the upper mounting bracket (Item 3) to the snorkel body (Item 1) with hex bolts (Item 4).

Apply Loctite 243 to each of the stainless steel mounting studs (Item 7).

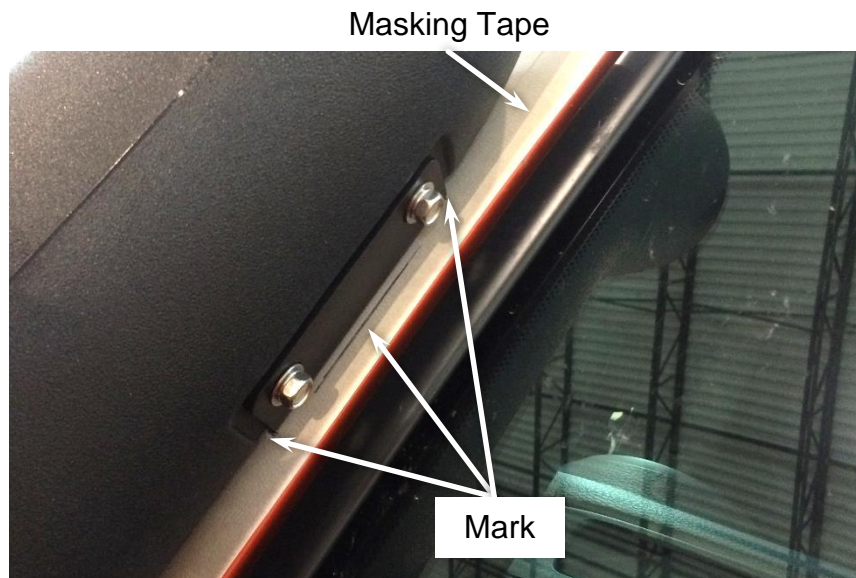
Install the studs finger tight into the snorkel body (item 1) mounting inserts as shown.



Place a strip of masking tape along the A-Pillar panel.

Carefully install the snorkel body (Item 1) to the fender.

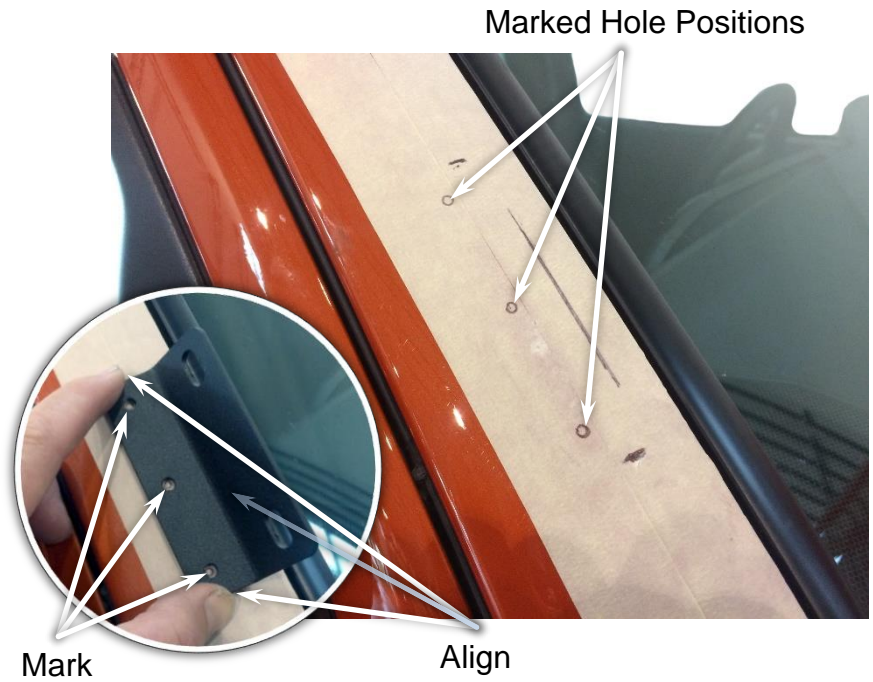
With the snorkel body correctly positioned, mark the outline of the upper mounting bracket (Item 3) onto the masking tape.



Remove the snorkel body (Item 1) from the vehicle, remove the upper mounting bracket (Item 3) from the snorkel body.

Position the upper mounting bracket onto the A-Pillar and align the bracket with the marked bracket outline.

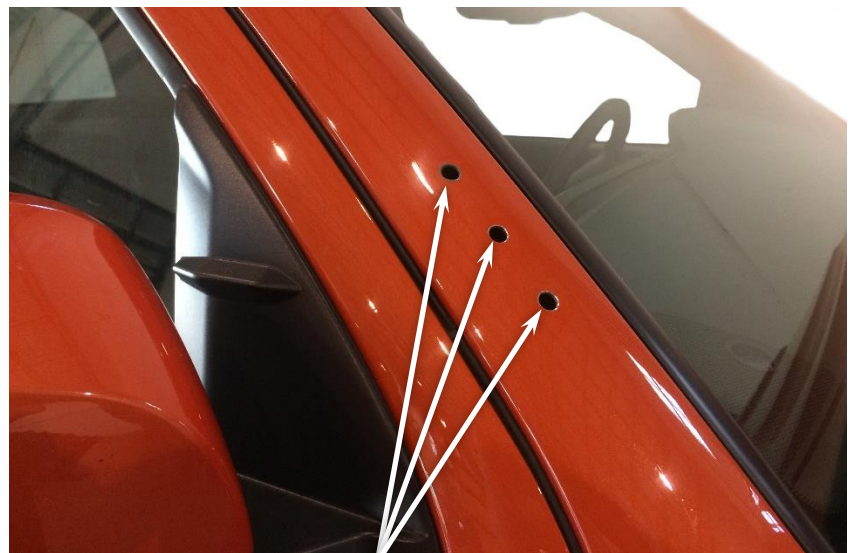
Mark the three mounting hole positions with a felt tip pen.



Drill a pilot hole for each of the three marked hole positions.

Drill each hole to 8mm diameter with a step drill or 8mm drill bit.

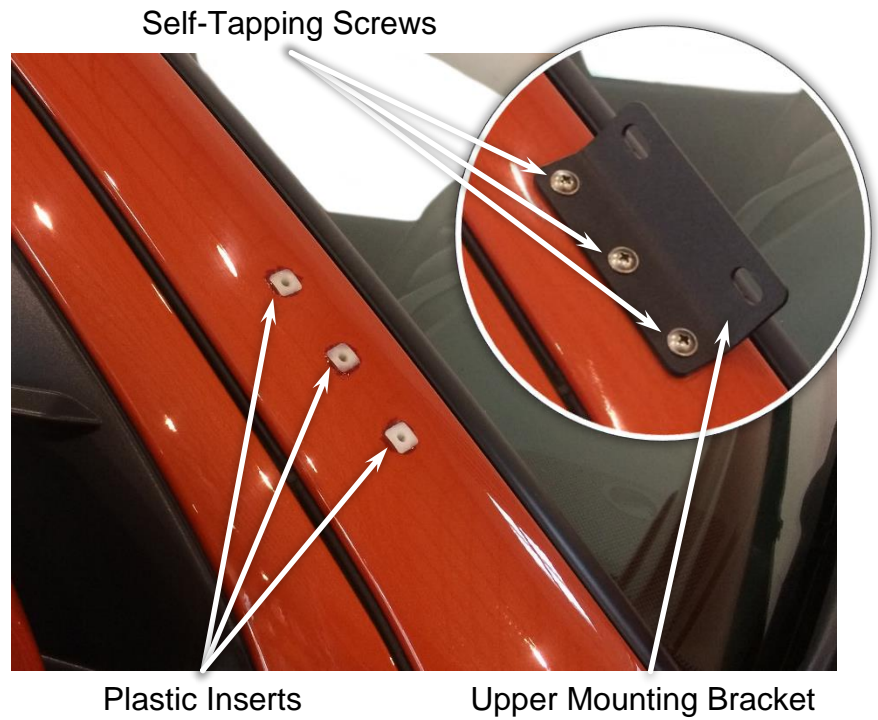
Deburr and paint holes.



Drill 8mm Dia

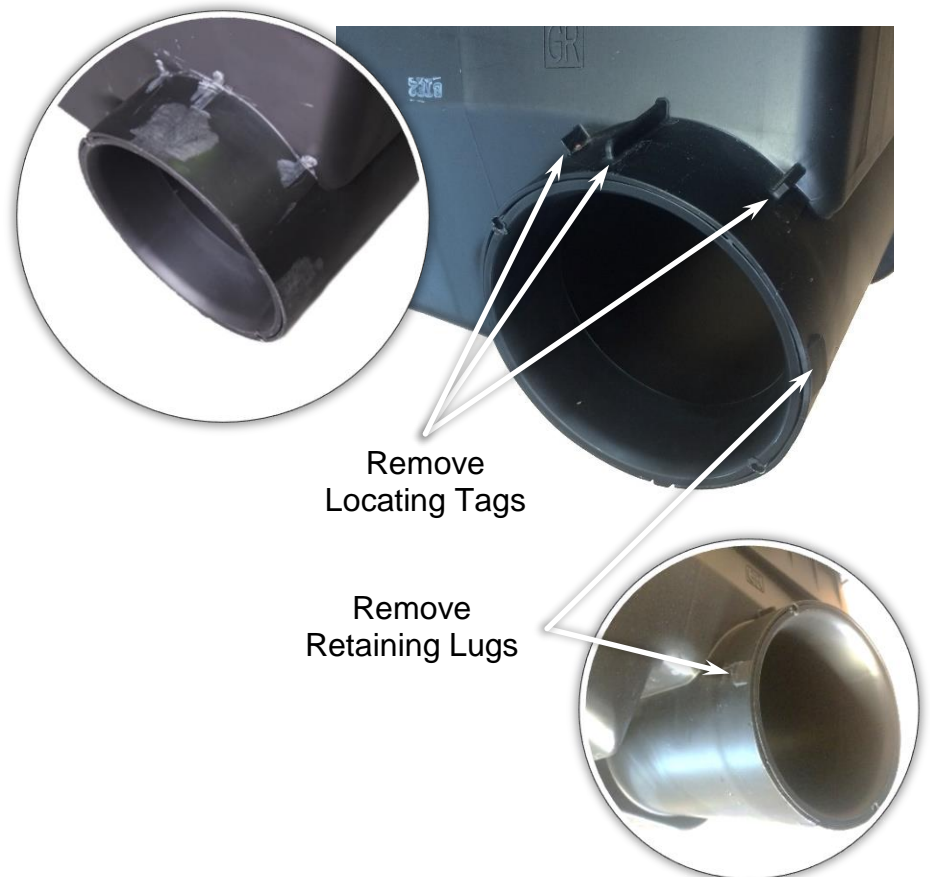
Install the plastic inserts (Item 6) into the 8mm diameter holes in the A-pillar.

Secure the upper mounting bracket (Item 3) to the A-pillar with three self-tapping screws (Item 5).



Using a file or grinder, remove all three locating tags from the air cleaner base inlet as shown.

Using a file or grinder, remove the two retaining lugs from the air cleaner base inlet as shown.



Install the air entry hose (item 10) through the hole in the inner fender panel.

Loosely install a 100/120mm hose clamp (item 11) over the end of the air entry hose.

100/120mm Hose Clamp



Install the air cleaner base back into position guiding the air cleaner base inlet into the air entry hose (item 10).

Fasten the air cleaner base with the original mounting hardware.

Do not tighten the hose clamp.

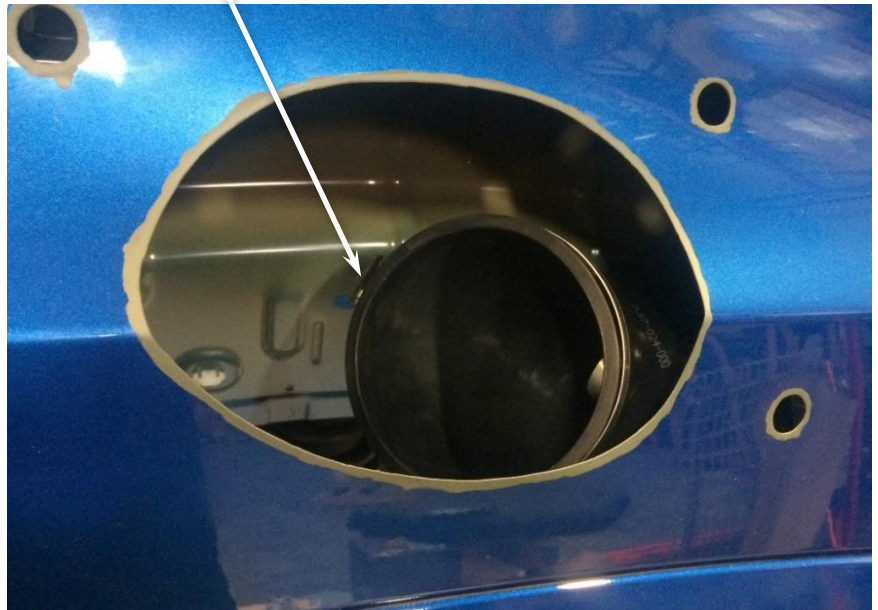
Air Entry Hose



Loosely install a 100/120mm hose clamp (Item 11) to the snorkel outlet end of the air entry hose as shown (note the orientation of the hose clamp).

Apply a small amount of lubricant to the inside of the air entry hose.

100/120mm Hose Clamp



Carefully install the snorkel body (Item 1) to the fender, guiding the snorkel body outlet snout into the air entry hose (item 10), align the snorkel body to fender and upper mounting bracket.

When correctly aligned, fasten the snorkel body to the fender with body washers (Item 8) and nyloc nuts (Item 9).

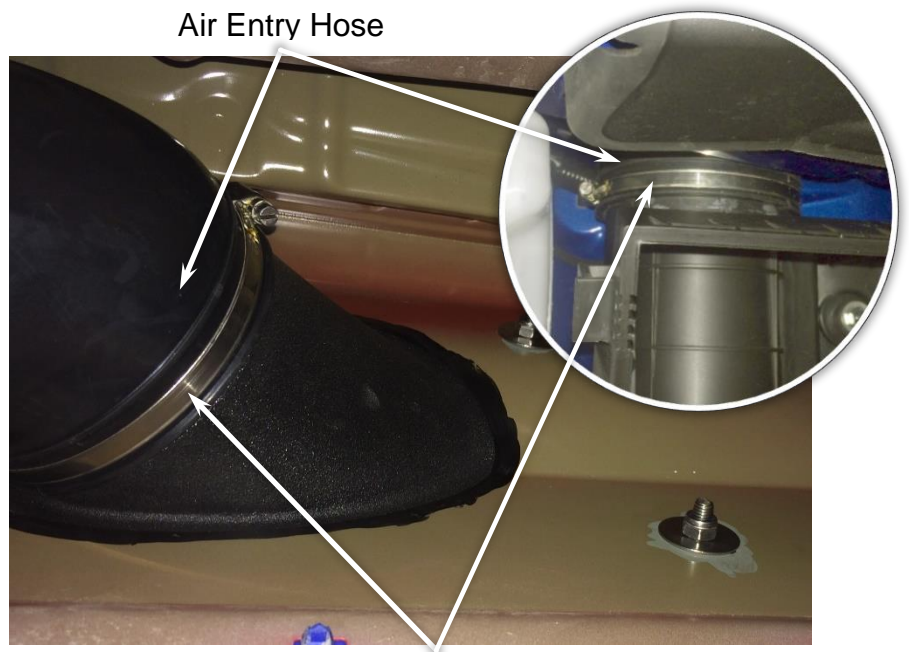
Fasten the snorkel body to the upper mounting bracket with hex bolts (Item 4).



17

Align the air entry hose for best fitment (*Ensure the air entry hose is installed hard up against the shoulder of the snorkel body outlet*), correctly position the 100/120mm hose clamps at either end of the air entry hose and tighten the hose clamps.

Hint: It may be necessary to un-bolt the washer bottle reservoir and move it slightly to gain better access to the hose clamp.



100/120mm Hose

18

Install the black hose clamp (Item 12) loosely over the base of the air ram assembly (Item 2).

Install the air ram assembly onto the snorkel body.

Align the air ram assembly and tighten the black hose clamp (Item 12).



19

Re-Install the fender protector, fender liner, air cleaner element, air cleaner lid, reconnect the air inlet duct, sensor wiring and any other items that may have been removed during the snorkel installation process.

20

N.B: It is the installer's responsibility to ensure that all connections are water tight.